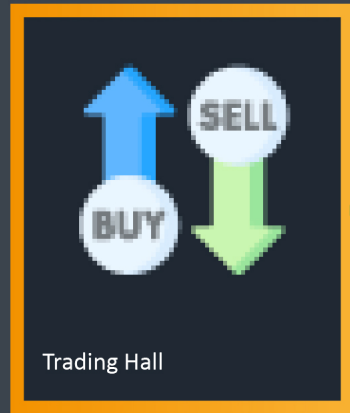
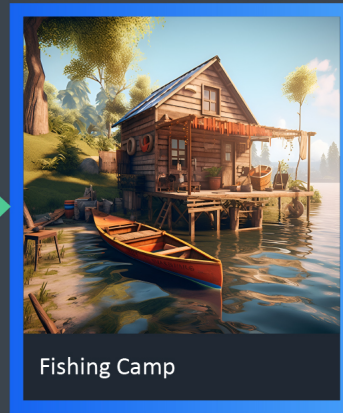


FISHING CAMPS

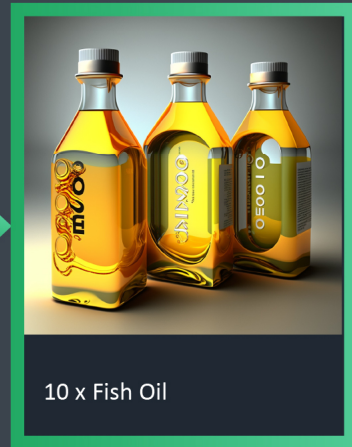
00



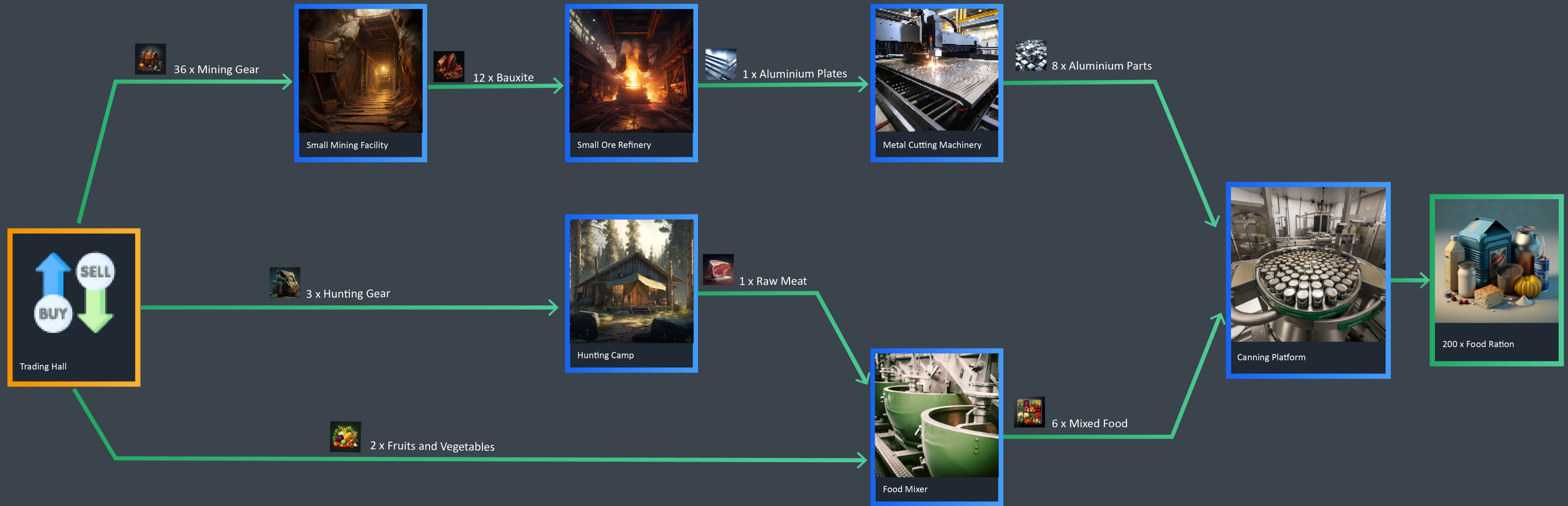
3 x Fishing Gear



5 x Fish



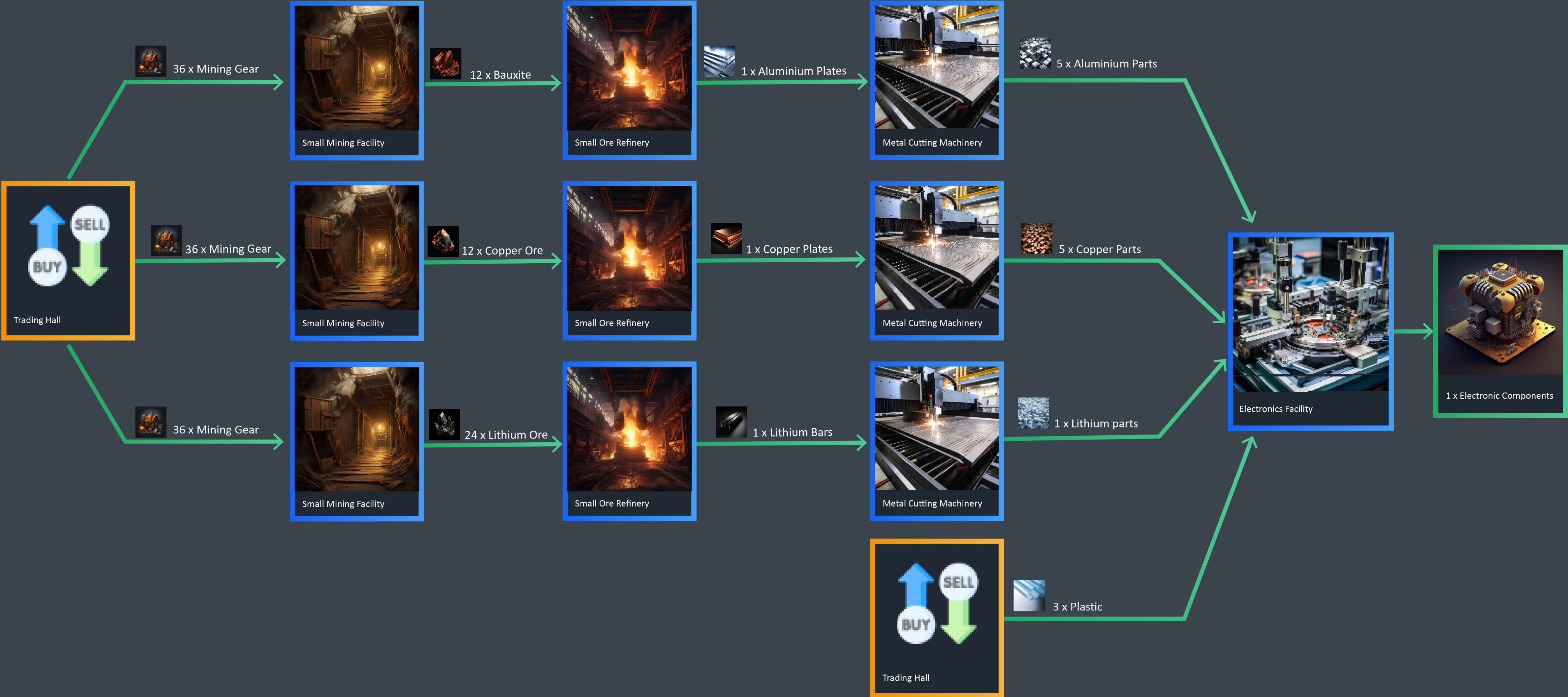
FOOD RATIONS



MINING FACILITIES



ELECTRONIC COMPONENTS

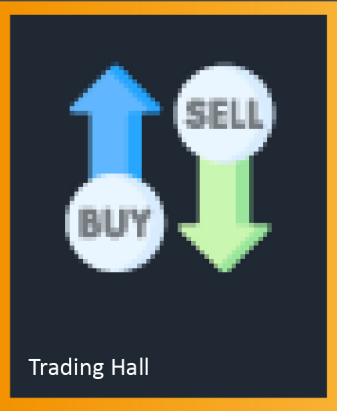


BATTERIES

03



1 x Electronic Components



4 x Plastic

02



5 x Aluminium Parts

02



5 x Graphite Parts

02



5 x Copper Parts

02



4 x Lithium Parts



OPTICAL

05

02

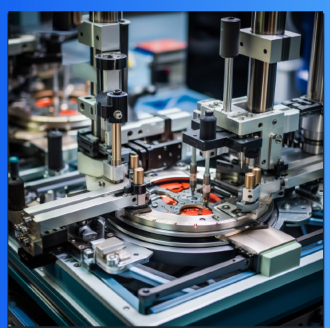


Metal Cutting Machinery



30 x Aluminium Parts

03



Electronics Facility



1 x Electronic Components



1 x Glass



Trading Hall



Opticals Facility



12 x Opticals

LUMBER

06



TRAVEL TOKEN

00



Fish Oil Extractor



10 x Fish Oil

03



Electronics Facility



10 x Electronic Components

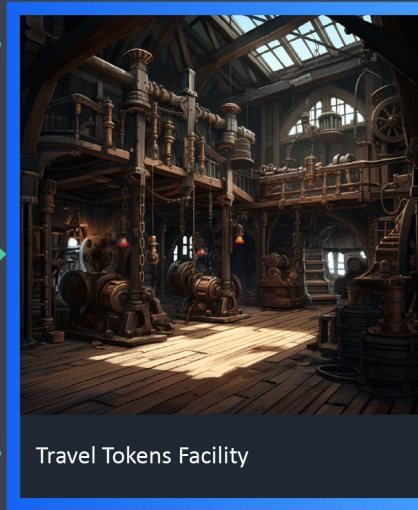
04



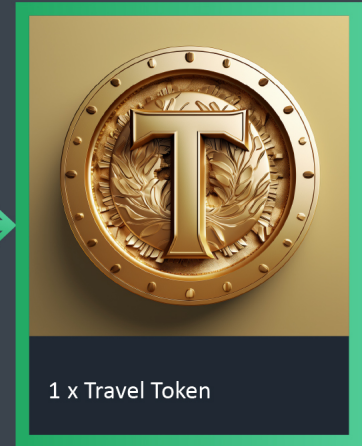
Batteries Facility



1 x Batteries



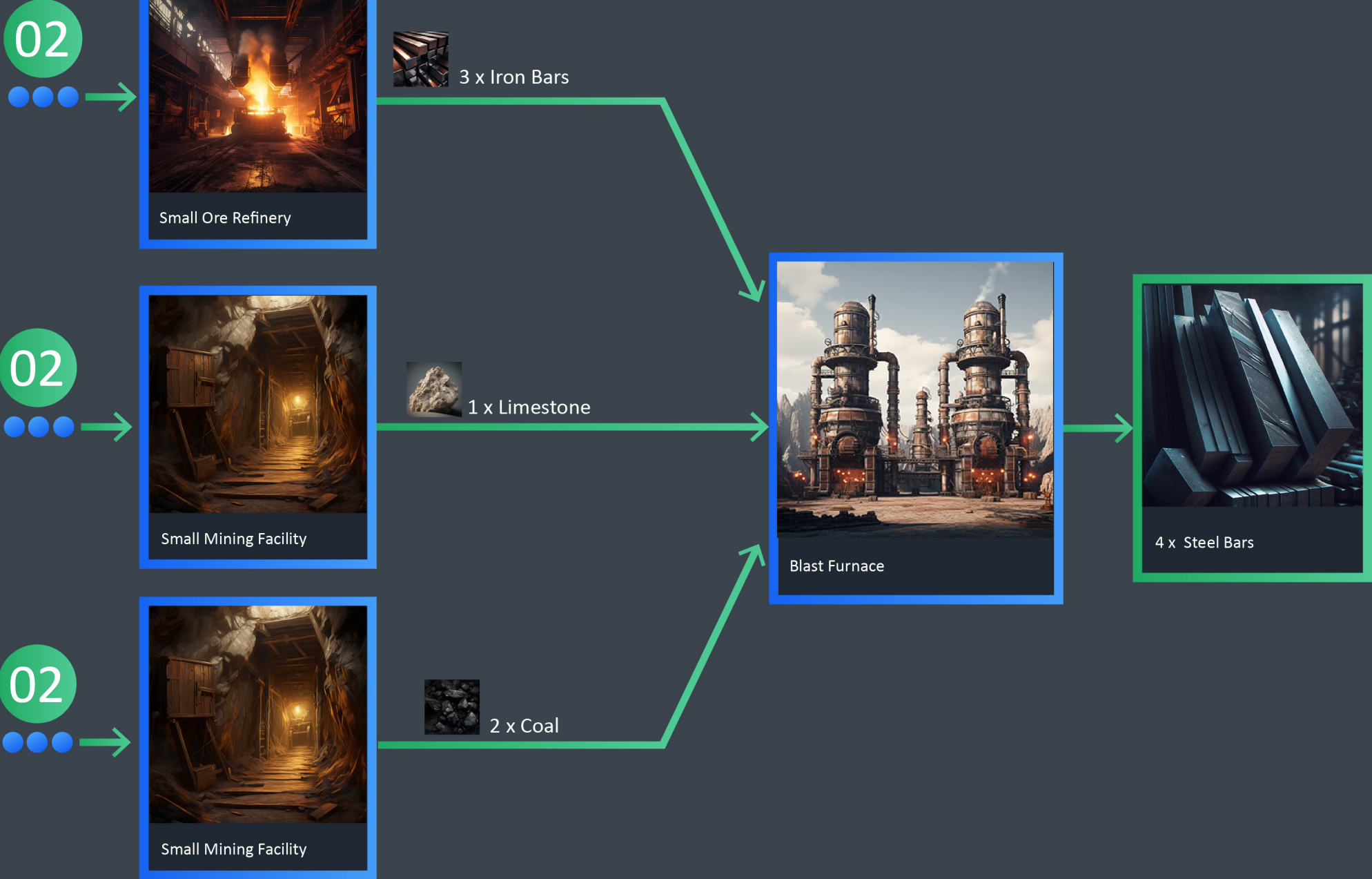
Travel Tokens Facility



1 x Travel Token

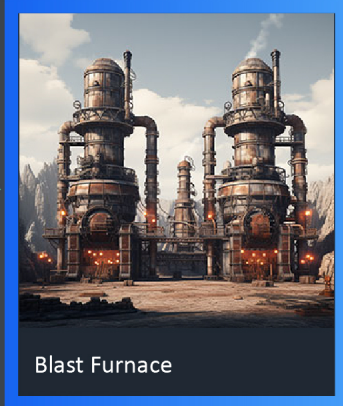
STEEL BAR

08

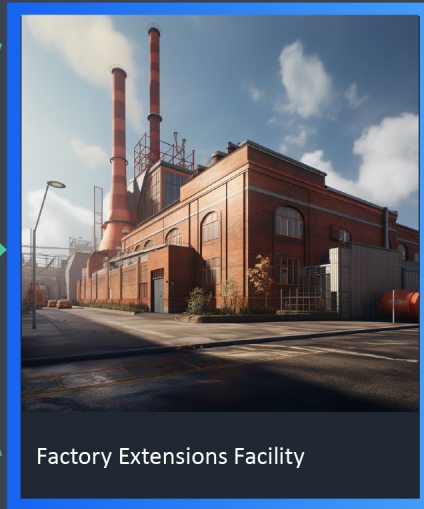


FACTORY EXTENSION KIT

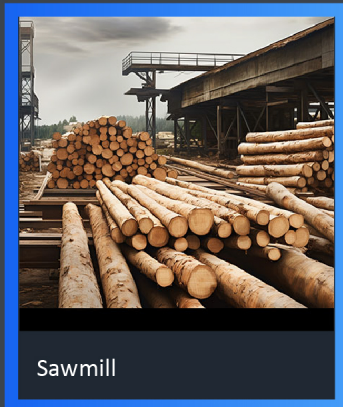
08



10 x Steel Bars



06



10 x Lumber